

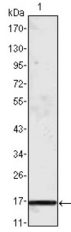
## MCP-1 Ab

Cat.#: BF0678  
Size: 50ul,100ul,200ul

Concn.: 1mg/ml  
Source: Mouse

Mol.Wt.: 13kDa  
Clonality: Monoclonal

Application:	ELISA 1/10000, WB 1/500 - 1/2000
Reactivity:	Human
Purification:	Affinity-chromatography.
Specificity:	MCP-1 Ab detects endogenous levels of total MCP-1.
Immunogen:	Purified recombinant fragment of human MCP-1 expressed in E. Coli.
Uniprot:	P13500
Description:	Monocyte chemoattractant protein-1 (MCP-1) is a member of the chemokine-beta family of cytokines. The protein is structurally related to the CXC subfamily of cytokines. Members of this subfamily are characterized by two cysteines separated by a single amino acid. This cytokine displays chemotactic activity for monocytes and basophils but not for neutrophils or eosinophils. It has been implicated in the pathogenesis of diseases characterized by monocytic infiltrates, like psoriasis, rheumatoid arthritis and atherosclerosis. It binds to chemokine receptors CCR2 and CCR4. It may play a inportant role in the initiation and/or progression of pulmonary hypertension (PH). Blockade of a systemic MCP-1 signal pathway in vivo may prevent PH.
Subcellular Location:	Secreted.
Tissue Specificity:	Expressed in the seminal plasma, endometrial fluid and follicular fluid (at protein level).
Similarity:	Belongs to the intercrine beta (chemokine CC) family.
Storage Condition and Buffer:	Mouse IgG1 in phosphate buffered saline (without Mg <sup>2+</sup> and Ca <sup>2+</sup> ), pH 7.4, 150mM NaCl, 0.02% sodium azide and 50% glycerol.Store at -20 °C.Stable for 12 months from date of receipt.



Western blot analysis using MCP1 mouse mAb against truncated MCP-1 recombinant protein.

**IMPORTANT:** For western blot, incubate membrane with diluted primary Ab in 5% w/v milk , 1X TBS, 0.1% Tween@20 at 4°C with gentle shaking, overnight.

For Research Use Only. Not for use in diagnostic and therapeutic procedures. Not for resale without express authorization.